

A2

**Bean and Ebbsfleet junction
improvements scheme**

We're open to traffic
June 2022



What we've achieved

This scheme to improve the junctions on the A2 will enable the proposed development and to help boost the economy in the area by managing the predicted increase in traffic, whilst also improving facilities for existing local residents. To help achieve this we have:

- Widened the junctions at Bean and Ebbsfleet so traffic can flow through them more easily.
- Added an extra lane to the coastbound carriageway between the new coastbound entry slip road at Bean and the A296 entry slip road.

- Made the roundabouts bigger at both junctions and put in traffic lights to help improve traffic flows.
- Improve routes for walkers and cyclists local to the junctions (safety not journey time)
- Added a new slip road onto the A2 coastbound from Bean Junction.

Awards

We have also been shortlisted and won industry leading awards during the project, including:

Construction News Awards

Digital Construction Excellence Highly Commended

NCE Tech Fest Awards

Best Use of Technology: Digital Engineering

CIHT's

Best Innovation



Testimonials



**Jackie Passey,
Assistant Centre Director at
Bluewater Shopping Centre,
Kent said:**

“It’s great to see that the A2 Bean and Ebbsfleet junction improvement scheme team have completed the works, which will reduce congestion in the area for our guests and staff alike, as well as other road users that use the A2 and the adjoining junctions. We have worked closely with the project team throughout the lifetime of the project, and they have listened to our feedback and made amendments where they have been able to, such

as installing the closures from 10.30pm during school holidays to help ensure our guests and staff can leave Bluewater with minimal disruption on their journey. It has been great to see the team achieve key milestones throughout the project, such as the new bridge opening in November last year, ahead of Black Friday and the Christmas holidays, which are key dates for us. The team involved us throughout the duration of the project, from design stages straight through to opening for traffic and we look forward to the key benefits this infrastructure will bring to all.”



**Julia Gregory,
Director of Projects
Ebbsfleet Development
Corporation said:**

“The completion of the A2 Junction works at Ebbsfleet and Bean is a significant step forward for Ebbsfleet Garden City, providing much needed capacity for both the evolving community within the Garden City and existing communities in the surrounding areas of North Kent.

Having co-funded the scheme with a £45m investment, Ebbsfleet Development Corporation has worked collaboratively with National Highways during initial concept stage, through to delivery on

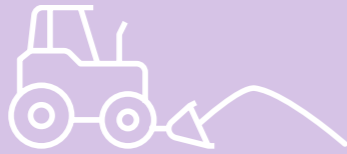
site, to meet the needs of the growing number of residents in the area. We are especially pleased that National Highways adopted the Ebbsfleet landscape palette to ensure that any planting will be both climate resilient as well as enrich the areas biodiversity. This will create an attractive gateway to the Garden City.

The additional cycling and walking measures introduced by the A2 Bean and Ebbsfleet junction improvements scheme is another example of working in partnership to contribute to Ebbsfleet’s Sustainable Transport Strategy, which will deliver a connected network of facilities for non-motorised users.”

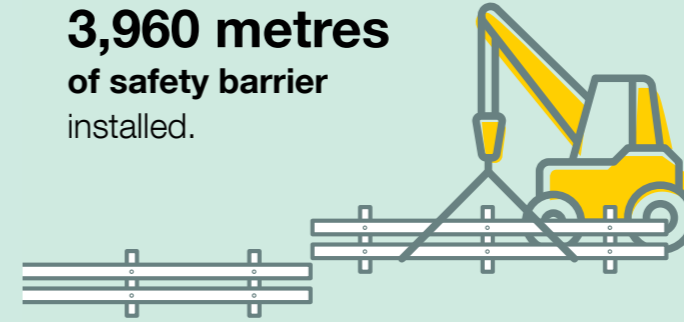
Facts and figures

£112 million

invested in the scheme.
(£45 million by EDC)



3,960 metres
of safety barrier
installed.



35,379 tonnes
of carriageway
surfacing.



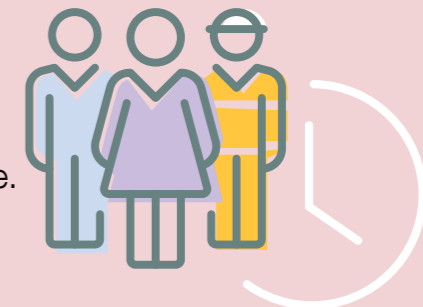
Over
£36+ million
generated in local spend.



201 of the people
employed to work
on the scheme
from the local area .



864,331
total hours
worked
on the scheme.



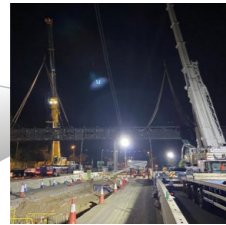
Timeline

Spring
2020



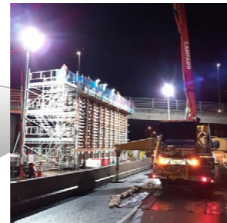
Start of construction on mainline A2

August
2020



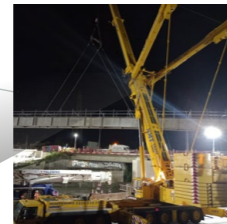
Start of works at both junctions

November
2020



Completion of central reservation works on mainline A2

August
2021



Installation of bridge beams at Bean

November
2021



Bean Lane bridge open to traffic

June
2022



Both junctions open to traffic

February
2022



Coastbound entry slip road at Bean completed

Making a difference in our communities

To make sure we leave a lasting 'local first' legacy, we've worked with charities, businesses, suppliers, schools, and colleges throughout the A2 Bean and Ebbsfleet scheme. For instance, we've:

- Worked with Spirits Rest Horse Sanctuary to assist with the relocation of the charity to their new location and donated materials for their new site in preparation of their animal memorial garden.
- Worked with local schools and colleges, taking part in careers fairs, supporting National Apprenticeship week, volunteering for career mentoring and workshops with various students.
- Donated supplies to a local homeless shelter, foodbanks, the Giving Tree and charities throughout the duration of the project, including holidays such as Christmas and Easter.
- Volunteered to support a local homeless shelter and delivered activity packs to children and their families.



Working with local homeless shelter.



Cheque donation



National Apprenticeship week February 2022



Easter egg volunteering

If you need help accessing this or any other National Highways information, please call **0300 123 5000** and we will help you.

For more information about the scheme:

a2beanandebbsfleetjunctionimprovements@nationalhighways.co.uk



© Crown copyright 2022.

You may re-use this information (not including logos) free of charge in any format or medium, under the terms of the Open Government Licence. To view this licence:

visit **www.nationalarchives.gov.uk/doc/open-government-licence/**

write to the **Information Policy Team, The National Archives, Kew, London TW9 4DU**, or email **psi@nationalarchives.gsi.gov.uk**.

Mapping (where present): © Crown copyright and database rights 2022 OS 100030649. You are permitted to use this data solely to enable you to respond to, or interact with, the organisation that provided you with the data. You are not permitted to copy, sub-licence, distribute or sell any of this data to third parties in any form.

This document is also available on our website at **www.nationalhighways.co.uk**

For an accessible version of this publication please call **0300 123 5000** and we will help you.

If you have any enquiries about this publication email **info@nationalhighways.co.uk** or call **0300 123 5000***. Please quote the National Highways publications code **PR170/21**.

National Highways creative job number LEE22_0071

*Calls to 03 numbers cost no more than a national rate call to an 01 or 02 number and must count towards any inclusive minutes in the same way as 01 and 02 calls.

These rules apply to calls from any type of line including mobile, BT, other fixed line or payphone. Calls may be recorded or monitored.

Printed on paper from well-managed forests and other controlled sources when issued directly by National Highways.

Registered office Bridge House, 1 Walnut Tree Close, Guildford GU1 4LZ

National Highways Limited registered in England and Wales number 09346363